

Burnside Commons

1600 NW Fairview Drive, Gresham OR 97030

This property is located on Fairview Drive at the Burnside Road intersection. With average daily traffic between 27,159 and 29,141 cars per day along Burnside on either side of Fairview Drive, this is a highly trafficked street. The City of Gresham is the fourth largest city in Oregon with approximately 105,594 people residing here. Gresham High School is located across the street and has an enrollment of 1,782 students. Neighboring tenants include Furniture Connection, Jackpot Lottery Deli, Mr J's, Nextt resale clothing, Massage and Chiropractic.



Available:

Suite 1800—22,100 SF

Suite 1600— 3,383 SF*

*Do Not Disturb Tenant
Restaurant End Cap*

Suite 1636—1,982 SF*

Can be combined for **5,368 SF
total*

**\$25.00 SF/Year, NNN
\$6.00 NNN**



Craig Barnard | craig@barnardcommercial.com | 503.616.2941
Ashley Rhea | ashley@barnardcommercial.com | 503.616.2942
www.barnardcommercial.com | 503.675.0900
5200 Meadows Road, Suite 150, Lake Oswego, OR 97035



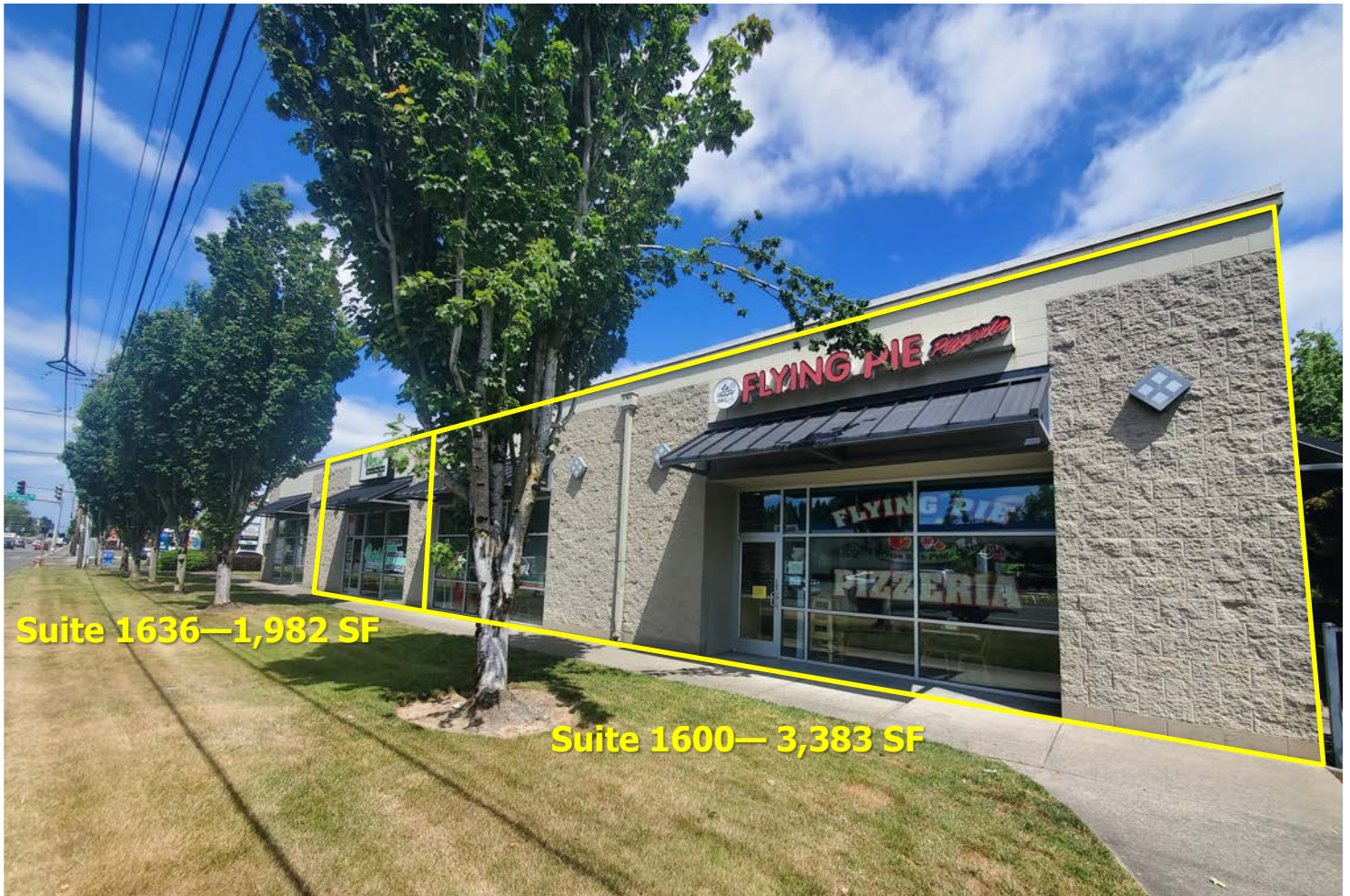
Craig Barnard | craig@barnardcommercial.com | 503.616.2941
Ashley Rhea | ashley@barnardcommercial.com | 503.616.2942
www.barnardcommercial.com | 503.675.0900
5200 Meadows Road, Suite 150, Lake Oswego, OR 97035



Demographics

	1 Mile	3 Mile	5 Mile
Population:	18,671	120,463	210,803
Average HH Income:	\$78,212	\$90,283	\$93,375

Craig Barnard | craig@barnardcommercial.com | 503.616.2941
Ashley Rhea | ashley@barnardcommercial.com | 503.616.2942
www.barnardcommercial.com | 503.675.0900
5200 Meadows Road, Suite 150, Lake Oswego, OR 97035



Craig Barnard | craig@barnardcommercial.com | 503.616.2941
Ashley Rhea | ashley@barnardcommercial.com | 503.616.2942
www.barnardcommercial.com | 503.675.0900
5200 Meadows Road, Suite 150, Lake Oswego, OR 97035



Suite 1600—3,383 SF



SPACE HIGHLIGHTS:

- Grease trap
- Type II hood
- 2 ADA restrooms
- High average daily traffic
- Outdoor seating
- Tall ceilings
- Ample Parking



Craig Barnard | craig@barnardcommercial.com | 503.616.2941
Ashley Rhea | ashley@barnardcommercial.com | 503.616.2942
www.barnardcommercial.com | 503.675.0900
5200 Meadows Road, Suite 150, Lake Oswego, OR 97035

Burnside Commons



**Average Daily Traffic
(cars per day)**

Burnside, E of Eastman
Parkway—27,159

Eastman Parkway, N of
Burnside—19,506



Craig Barnard | craig@barnardcommercial.com | 503.616.2941
Ashley Rhea | ashley@barnardcommercial.com | 503.616.2942
www.barnardcommercial.com | 503.675.0900
5200 Meadows Road, Suite 150, Lake Oswego, OR 97035