

Woodburn Commons

1537 Mount Hood Ave, Woodburn, OR 97071

Woodburn Commons is a newer construction retail strip center on the East side of I-5 in Woodburn. This center is located on Mt.Hood Avenue next to Midvalley Plaza where Dollar Tree, Carls Jr, Dutch Bro's, Shari's and others are close by neighbors. Existing Tenant's within the center include Tan Republic, Hair Express, nail salon, Cricket Wireless, a bakery and more. Enjoy easy access and great parking in this center. Average daily traffic along this stretch of Mt.Hood Avenue is 14,600 cars.

Demographics

2017 Estimate	1 Mile	3 Mile	5 Mile
Population:	8,678	32,654	40,938
Average HH Income:	\$56,716	\$59,378	\$61,260



Available:

Suite 106—1,064 SF

\$24.00 PSF/Year, NNN

\$4.73 NNN

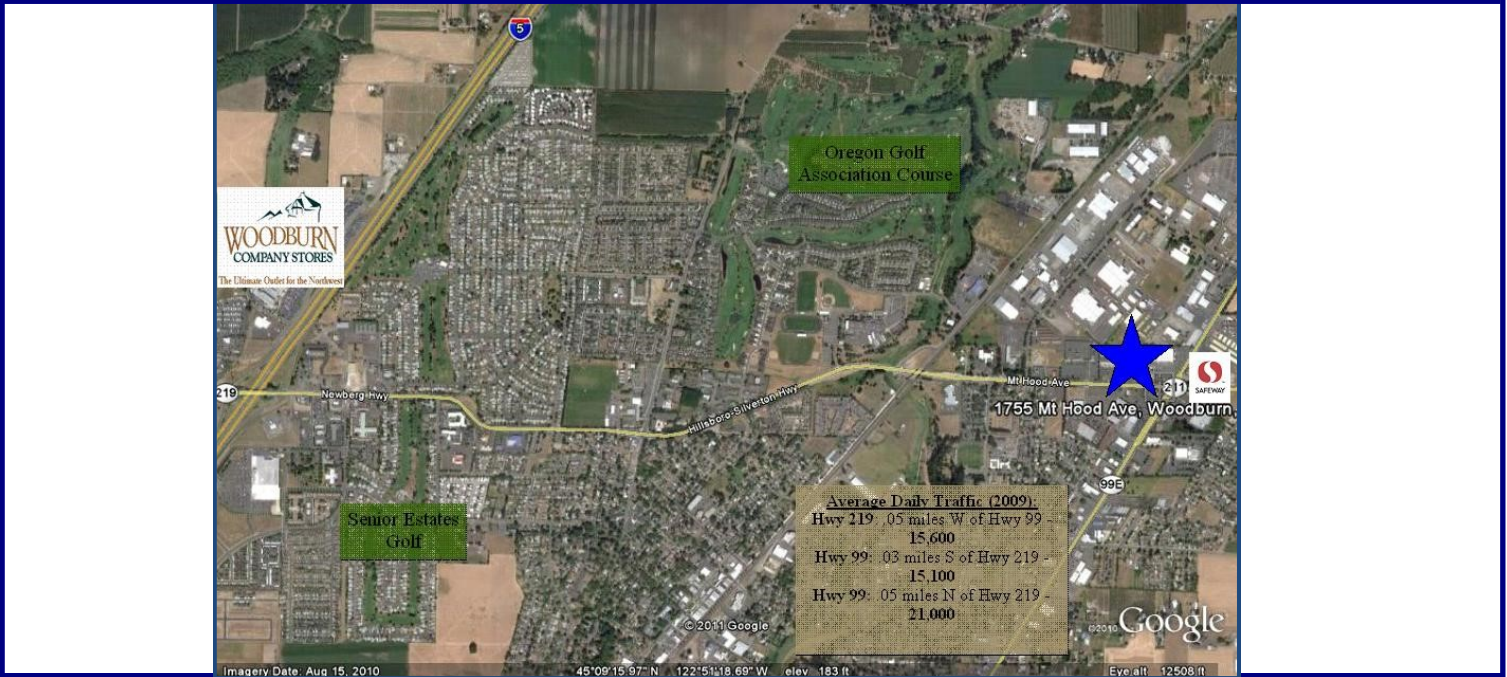
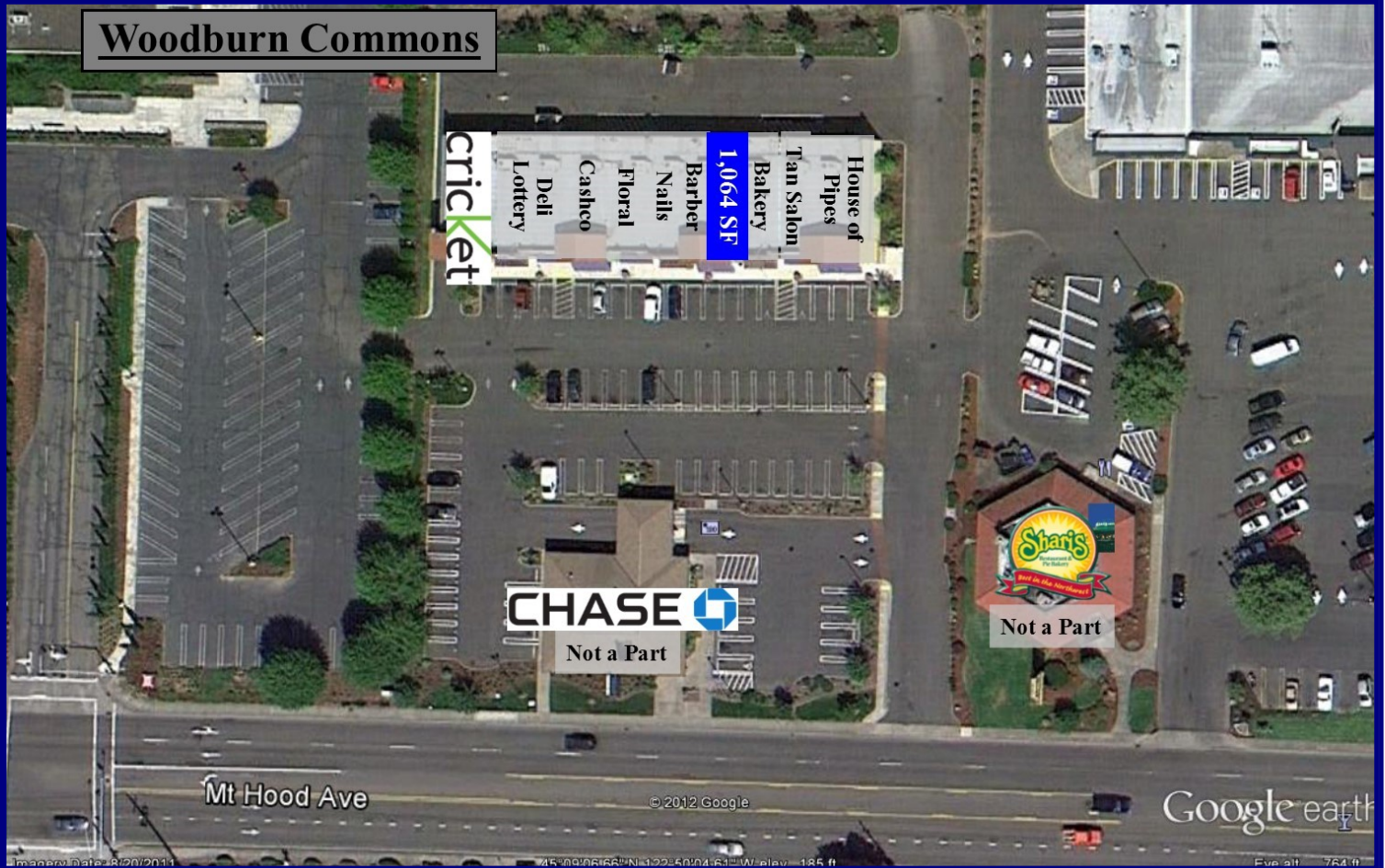


503.675.0900 | Paul Miller | Email: paul@barnardcommercial.com

www.barnardcommercial.com | Mail: 6650 SW Redwood Lane Suite 330, Portland OR 97224

Woodburn Commons

Woodburn Commons



503.675.0900 | Paul Miller | Email: paul@barnardcommercial.com

www.barnardcommercial.com | Mail: 6650 SW Redwood Lane Suite 330, Portland OR 97224