

Results Driven Retail SolutionsSM

Barnard Commercial
Real Estate

Greenhouse Square

16040—16220 SE 82nd Ave, Clackamas, OR 97015



Greenhouse Square is a high traffic neighborhood center shadow anchored by Fred Meyer on old 82nd Ave. Located just off of I-205 this shopping center is easily accessible and serves a broad trade area. This center has a great Tenant mix with neighbors including Dollar Tree, Black Rock Coffee, Wendy's, Taco Bell and many others. Building signage and monument signage are available.

Available:

Suite 16060—3,700 SF
Divisible to approx. 1,500 SF

Suite 16180—982 SF

\$18.00 SF/Year, NNN
Approx. \$8.55 NNN



503.675.0900 | Ashley Rhea or Craig Barnard
ashley@barnardcommercial.com or craig@barnardcommercial.com
www.barnardcommercial.com | 5200 Meadows Road, Suite 150, Lake Oswego, OR 97035

All information contained herein was obtained from sources deemed reliable. No guarantee is made with respect to accuracy. Specifications subject to change without notice.

Greenhouse Square

Barnard Commercial
Real Estate

Suite	Tenant	GLA sq. ft.
16050	Willamette Veterinary	2,949
16052	my gym children's fitness ctr.	3,012
16054	Golden Dragon Foot Spa	963
16056	Lighthouse Fish & Chips	1,916
16058	NW Lice Centers, Inc.	868
16060	Available	3,700
16068	Farmers Insurance	670
16080	Lighthouse	2,148
16100	Conways Jazz Kitchen	4,000
16110	Once Upon a Child	5,244
16112	Arthur Murray Dance Studio	5,063
16116	Impact Jiu Jitsu	4,038
16120	Cosmic Vapor Lounge	1,280
16122	Bubble Tea	1,270
16132	Akira Sushi	2,855
16136	Remedy Salon	1,067
16138	Black Rock Coffee	540
16140	160 Driving	1,475
16142	O.L.C.C. Liquor Store	2,555
16144	O.C. Nails	1,319
16152	Swiss Denture Center	1,150
16180	Available	982
16184	New Cathy Restaurant	3,150
16186	Mudpuppies Grooming	1,663
16190	Salon Centric/Maly's West	3,312
16200	Dollar Tree #5032	12,763



503.675.0900 | Ashley Rhea or Craig Barnard
 ashley@barnardcommercial.com or craig@barnardcommercial.com
 www.barnardcommercial.com | 5200 Meadows Road, Suite 150, Lake Oswego, OR 97035

Results Driven Retail SolutionsSM

Barnard Commercial
Real Estate

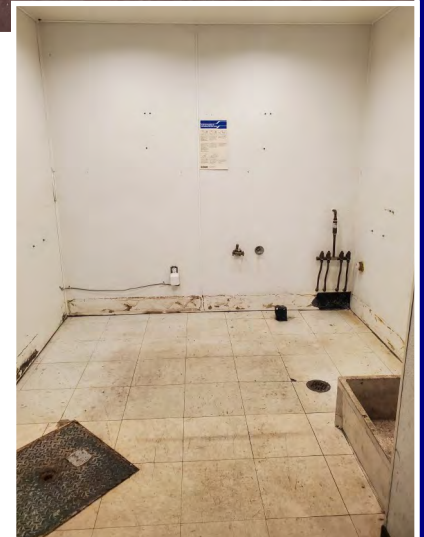
Greenhouse Square

Suite 16180—982 SF



SPACE HIGHLIGHTS:

- Stand alone building
- Grease trap
- Mop sink
- Two restrooms



503.675.0900 | Ashley Rhea or Craig Barnard
ashley@barnardcommercial.com or craig@barnardcommercial.com
www.barnardcommercial.com | 5200 Meadows Road, Suite 150, Lake Oswego, OR 97035

All information contained herein was obtained from sources deemed reliable. No guarantee is made with respect to accuracy. Specifications subject to change without notice.