

Results Driven Retail Solutions<sup>SM</sup>

**Barnard Commercial**  
Real Estate

# Courtney Plaza

13843 SE McLoughlin Blvd, Milwaukie OR 97222

View Online  
With Video  
Tours:



Courtney Plaza is a strip center located on the northern end of SE McLoughlin Blvd (Hwy 99E) in Milwaukie with high average daily traffic. This location offers great signage, visibility, plenty of parking and easy access.



## Available:

**1,100 SF**

**\$12.00 SF/Year, NNN**

**\$3.50 NNN**

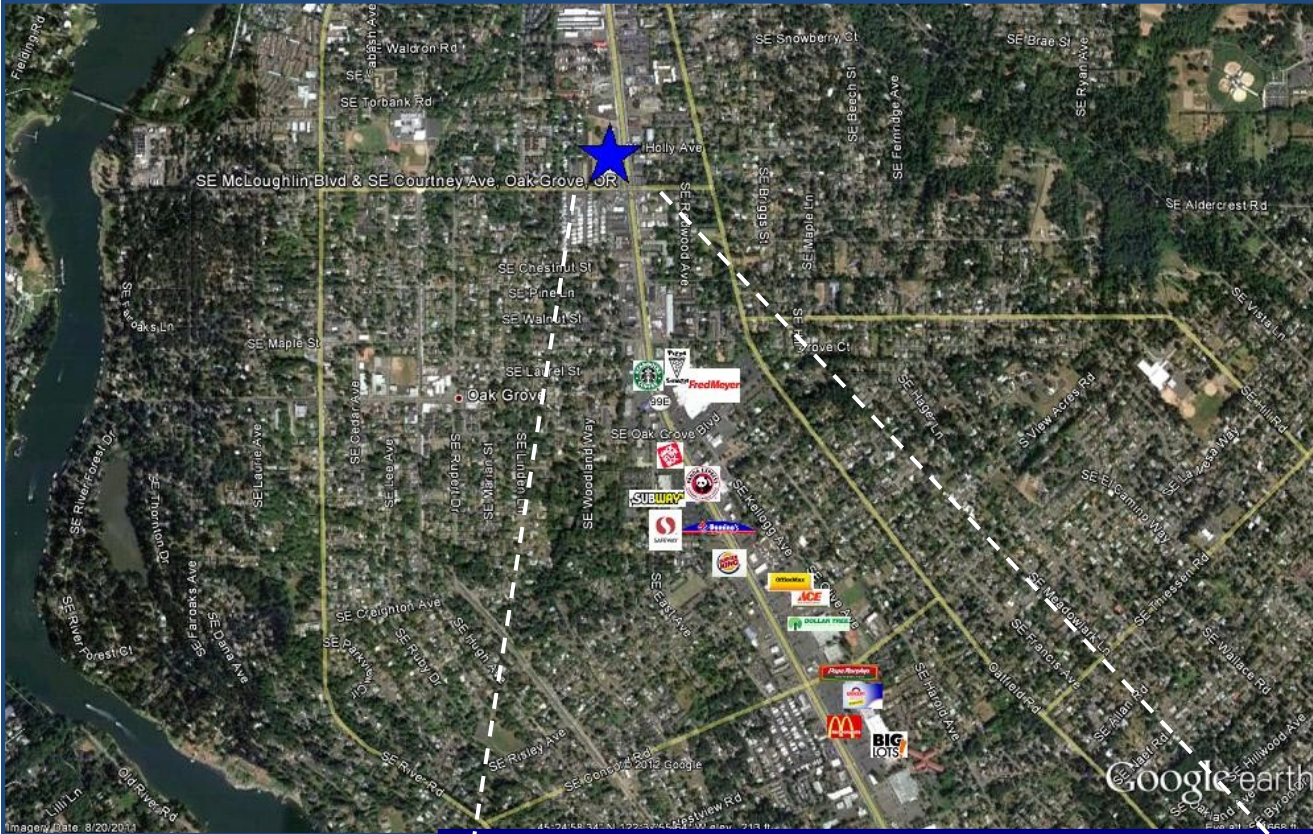
### Demographics

	1 Mile	3 Mile	5 Mile
<b>Population:</b>	14,255	93,216	264,732
<b>Average HH</b>	\$66,411	\$72,564	\$73,805
<b>Income:</b>			

503.675.0900 | Email: Paul@barnardcommercial.com | [www.barnardcommercial.com](http://www.barnardcommercial.com)  
Mail: 6650 SW Redwood Lane, Suite 330, Portland OR 97224

All information contained herein was obtained from sources deemed reliable. No guarantee is made with respect to accuracy. Specifications subject to change without notice.

# Courtney Plaza



503.675.0900 | Email: [Paul@barnardcommercial.com](mailto:Paul@barnardcommercial.com) | [www.barnardcommercial.com](http://www.barnardcommercial.com)  
 Mail: 16650 Redwood Lane, Suite 330, Portland OR 97224