

Results Driven Retail SolutionsSM

Barnard Commercial
Real Estate

1621 NE Baker St

1621—1629 NE Baker Street, McMinnville OR 97128



This property is located on the main highway through the town of McMinnville with average daily traffic of 22,169 cars per day. McMinnville is the largest city in Yamhill county in the heart of Oregon's wine country with a population of 34,666 residents. The vacant space was formerly Sears and the adjacent space is currently rented month to month. The property has easy access with plenty of parking and a pylon sign with great exposure.

Available:

12,777 SF
Formerly Sears
\$13.00 SF/Year, NNN

5,904 SF
Currently leased MTM

Lot Size—60,113 SF
(1.38 Acres)

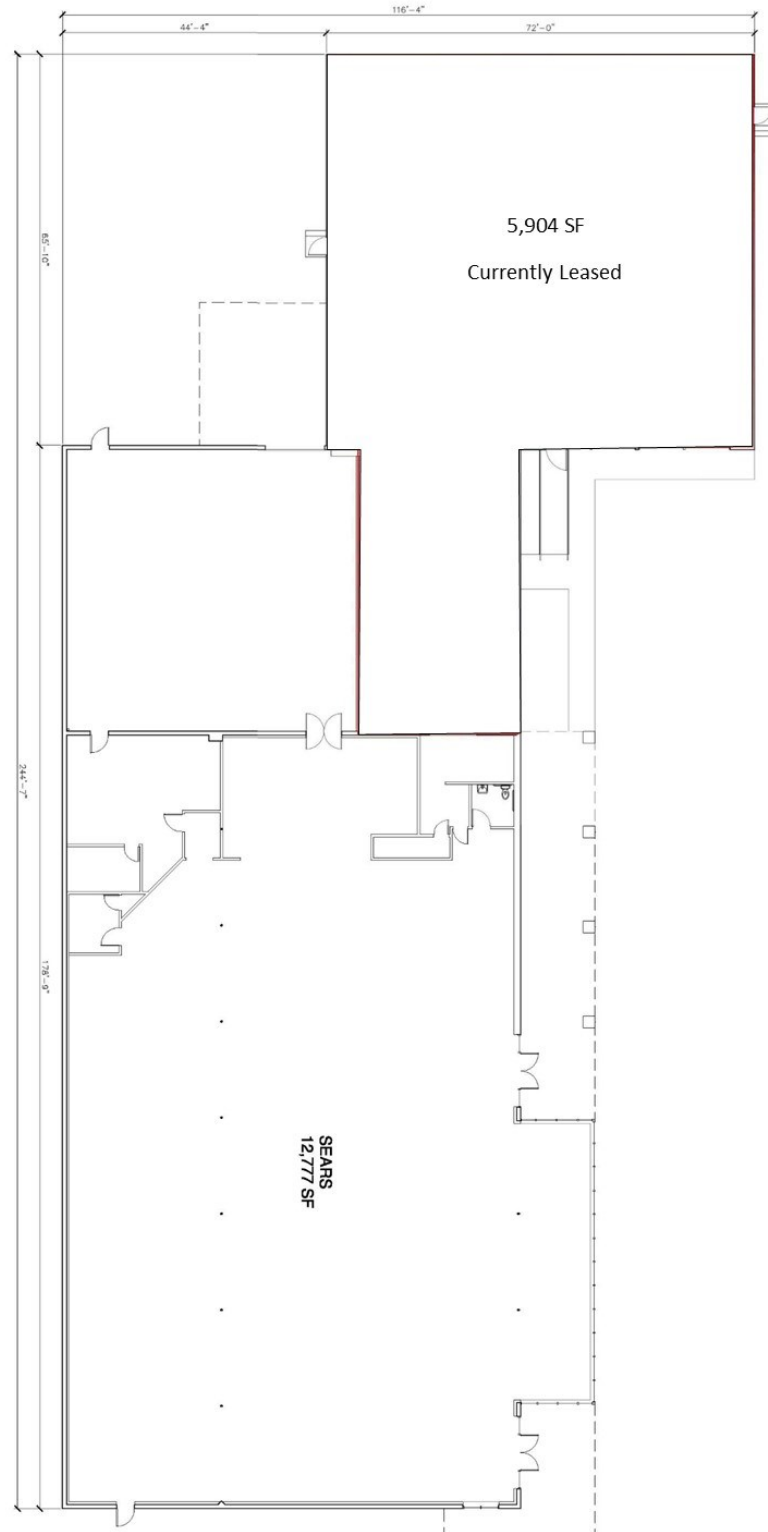


Ashley Rhea | 503.616.2942 | Ashley@barnardcommercial.com
Craig Barnard | 503.616.2941 | craig@barnardcommercial.com
www.barnardcommercial.com | 5200 Meadows Road Suite 150, Lake Oswego OR 97035

All information contained herein was obtained from sources deemed reliable. No guarantee is made with respect to accuracy. Specifications subject to change without notice.

1629 NE Baker St

1629 NE Baker Street, McMinnville OR 97128



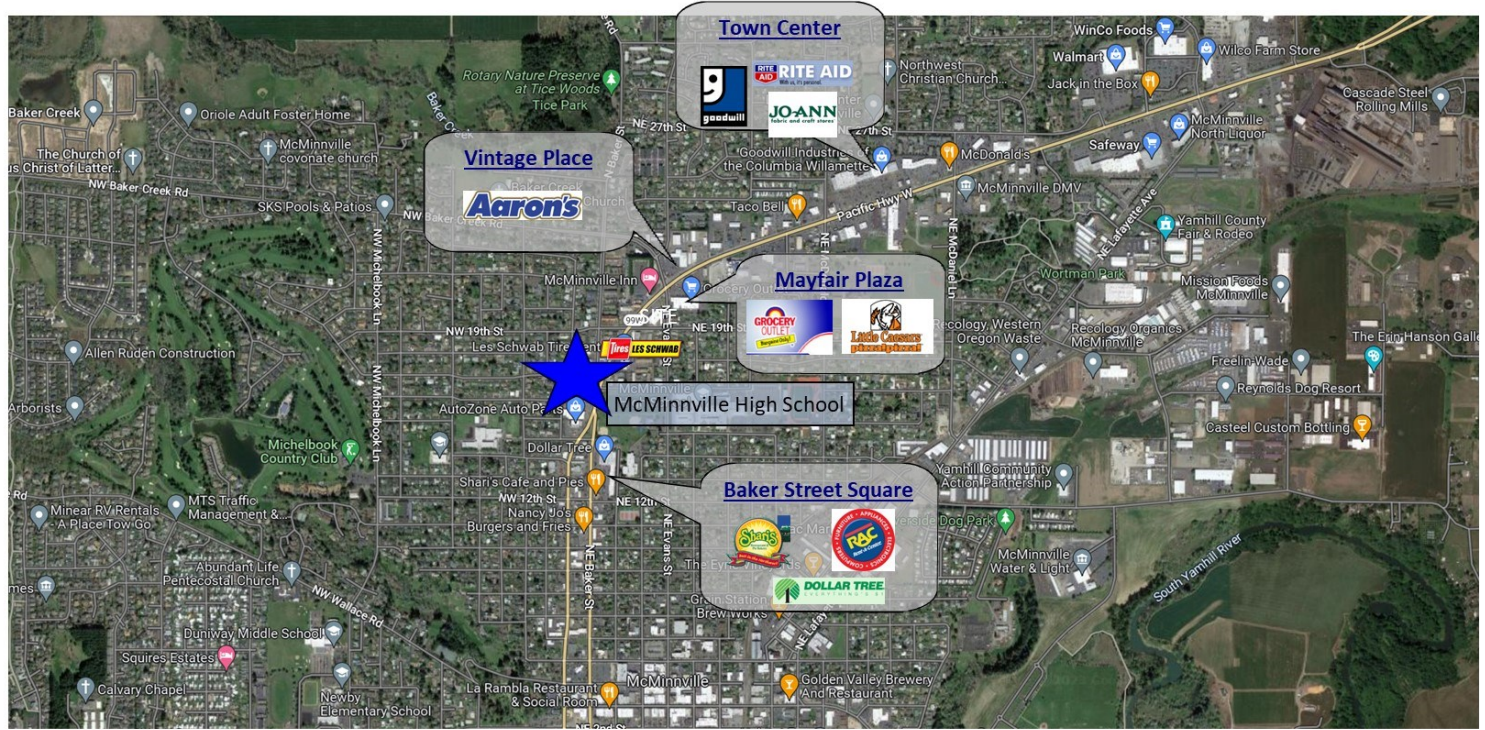
Ashley Rhea | 503.616.2942 | Ashley@barnardcommercial.com
Craig Barnard | 503.616.2941 | craig@barnardcommercial.com
www.barnardcommercial.com | 5200 Meadows Road Suite 150, Lake Oswego OR 97035

Results Driven Retail SolutionsSM

Barnard Commercial
Real Estate

1629 NE Baker St

1629 NE Baker Street, McMinnville OR 97128



Ashley Rhea | 503.616.2942 | Ashley@barnardcommercial.com
Craig Barnard | 503.616.2941 | craig@barnardcommercial.com
www.barnardcommercial.com | 5200 Meadows Road Suite 150, Lake Oswego OR 97035

All information contained herein was obtained from sources deemed reliable. No guarantee is made with respect to accuracy. Specifications subject to change without notice.