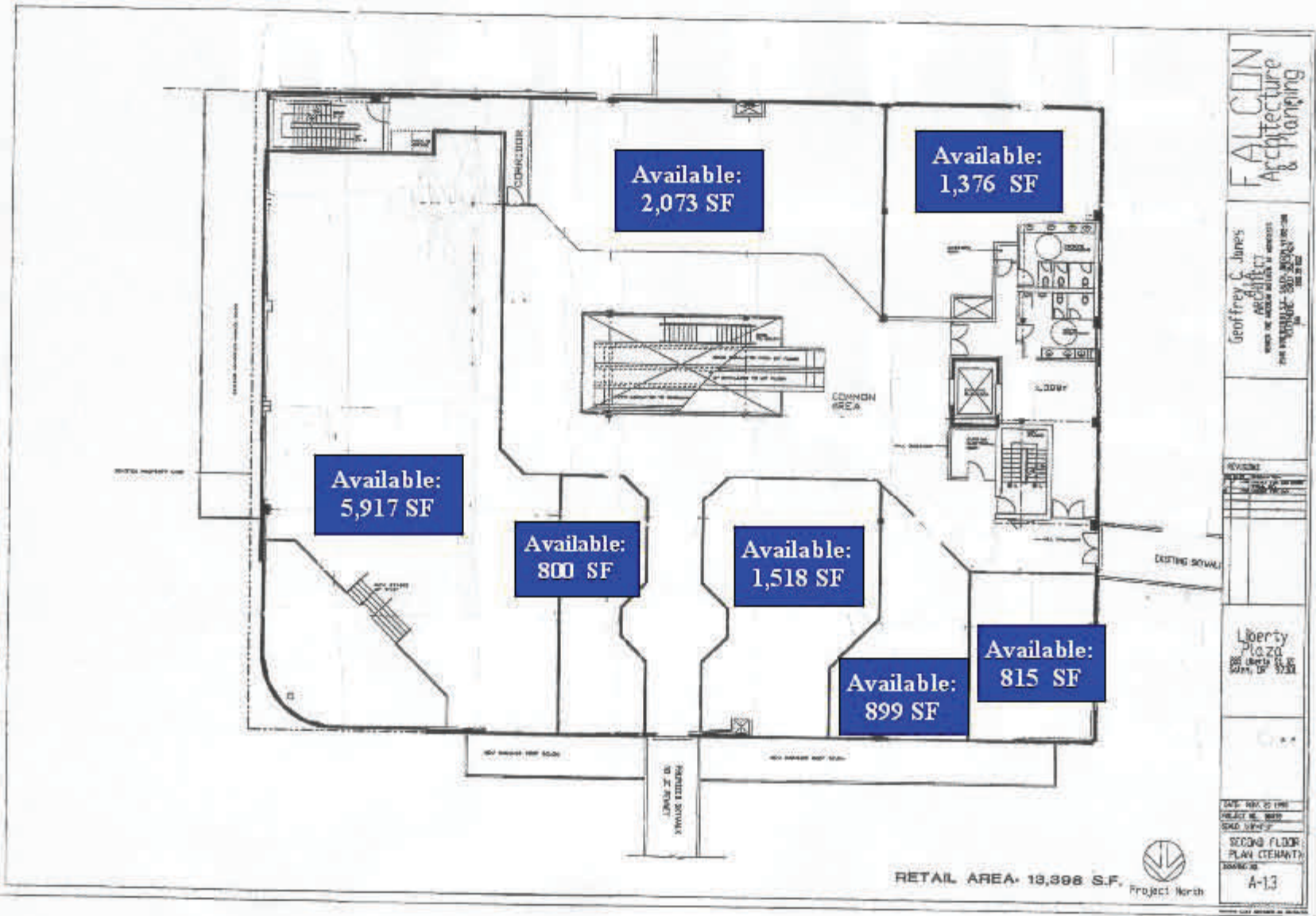
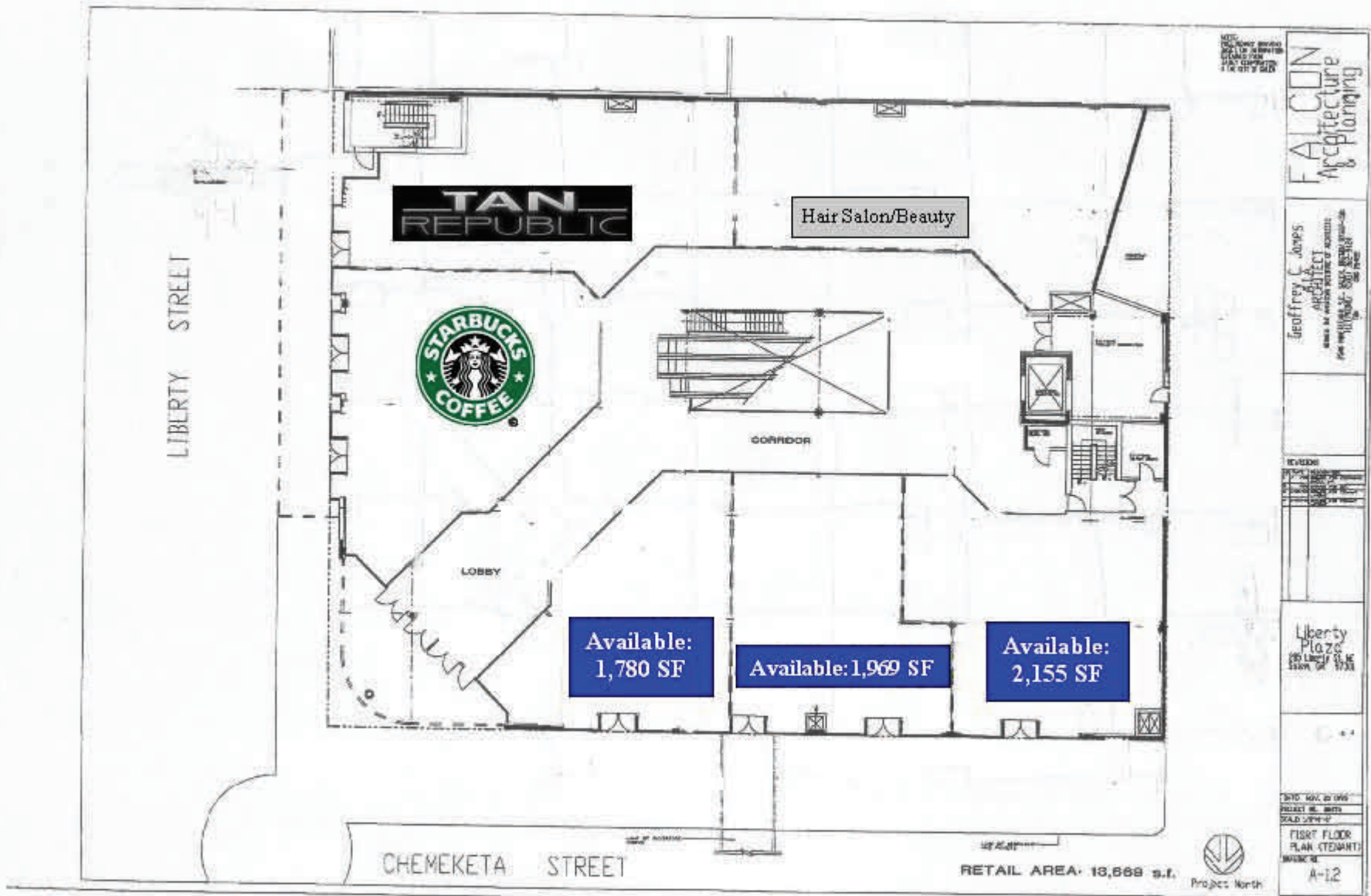


Liberty Plaza: Second Floor



Liberty Plaza: First Floor



NO COPY BEING
MADE FOR
RECORDING
BY CITY SD

FALCON
Architecture
& Planning

Geoffrey C. Jones
ARCHITECT
1000 N. W. 10th St., Suite 100
Portland, OR 97227-3000
Tel: 503.222.8888
Fax: 503.222.8889

NO.	DATE	DESCRIPTION

Liberty Plaza
1000 N. W. 10th St.
Portland, OR 97227

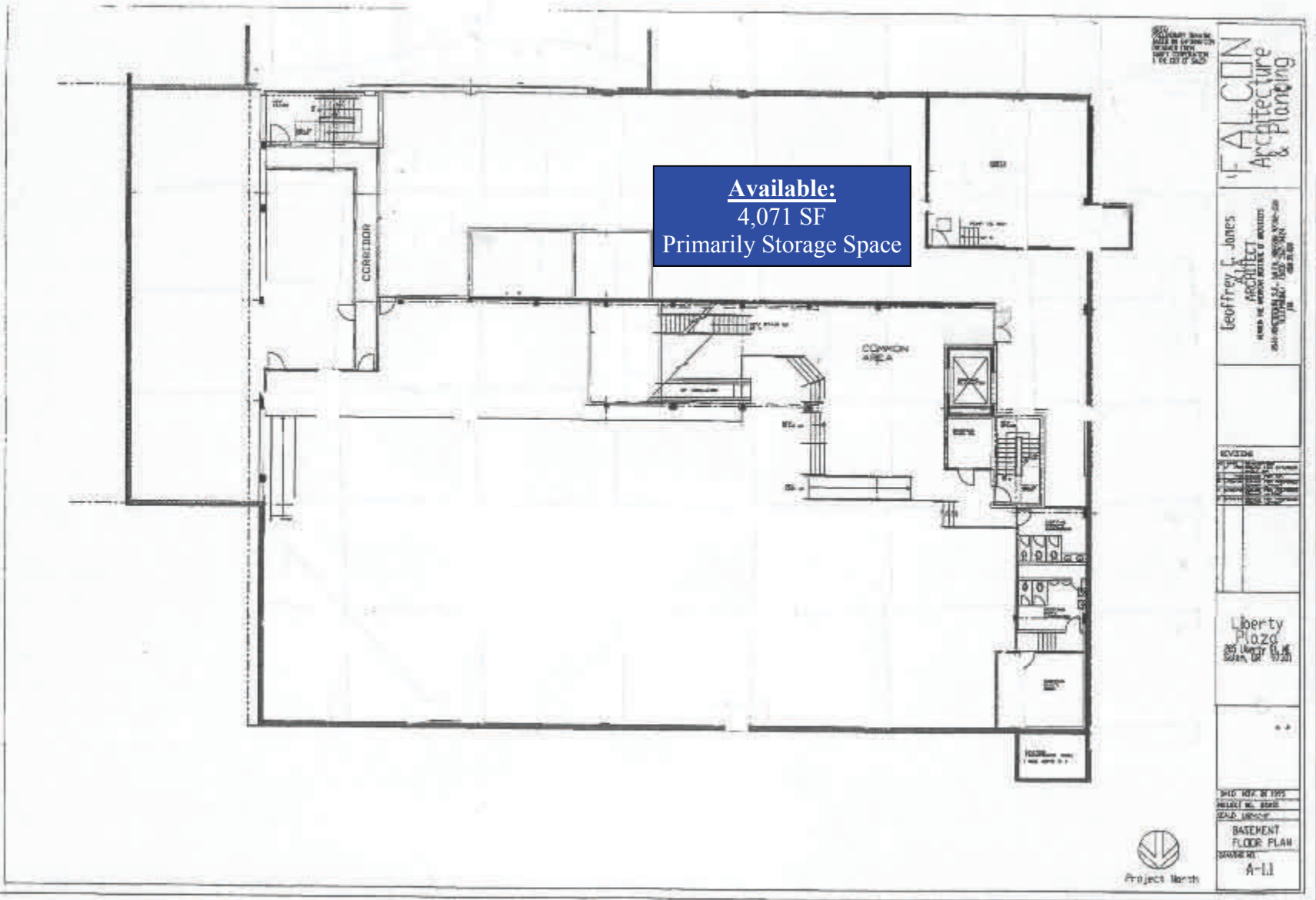
DATE: 10/12/06
PROJECT NO: 0601
SCALE: 1/8" = 1'-0"

FIRST FLOOR
PLAN (STEWART)
MARKER

A-12



Liberty Plaza: Basement Floor



Available:
4,071 SF
Primarily Storage Space

SEE SHEET 100-1 FOR
GENERAL NOTES
100-2 THROUGH 100-5

FALCON
Architecture
& Planning

Geoffrey C. Jones
ARCHITECT
1000 W. 10TH AVENUE, SUITE 1000
DENVER, CO 80202-1000
TEL: 303.733.1111
WWW.FALCONARCH.COM

REVISIONS

NO.	DATE	DESCRIPTION

Liberty
Plaza
Basement Floor

DATE: 08/14/01
DRAWN BY: JCS
SCALE: AS SHOWN

BASEMENT FLOOR PLAN
SHEET NO. A-11

