

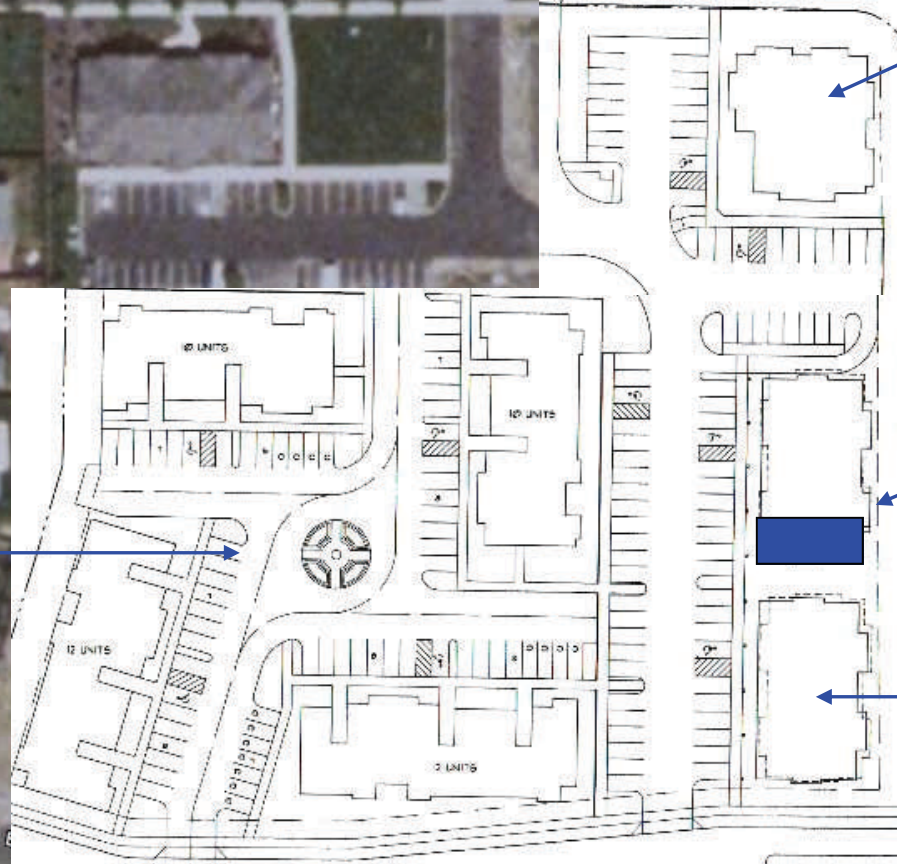
Hillsdale Plaza

NW 2nd St

NW Hill Rd & NW 2nd St, McMinnville, OR 97128

Westhills Dr

Designated
Multiple
Dwelling
Residential



Ideal for
Restaurant/
Sports Bar

1,640 SF Retail
250 SF Office

Potential Retail
Tenants:
Wireless Services
Nail Salon
Drycleaners
Insurance Office

Future Retail
Building
5,000 Sq Ft Total

© 2010 Google
Image State of Oregon

© 2009 Google