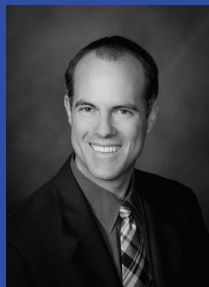


FOR LEASE

Barnard Commercial
Real Estate

1234 Baseline

Hillsboro, Oregon



Craig Barnard
President



1234 Baseline Suite A, Hillsboro, OR 97123



Office Space

This available office is adjacent to the Washington Federal Bank on Baseline. It is built out with six offices, a conference room, men's and women's restrooms and a kitchen/break room.

Available:
1,800 SF

\$18.00 SF/Year, NNN

Demographic Information

2010 Estimate:	1 Mile	3 Mile	5 Mile
Population:	5,867	58,759	105,444
Avg HH Income:	\$56,450	\$64,303	\$64,827

Phone: 503-675-0900
Fax: 503-675-0948

Barnard Commercial
17937 SW McEwan Road
Suite 200
Portland, OR 97224

craig@barnardcommercial.com

Visit our website at:
www.barnardcommercial.com



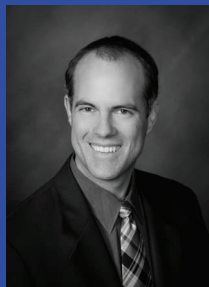
All information contained herein was obtained from sources deemed reliable. No guarantee is made with respect to accuracy. Specifications subject to change without notice.

FOR LEASE

Barnard Commercial
Real Estate

1234 Baseline

Hillsboro, Oregon



Craig Barnard
President



Phone: 503-675-0900
Fax: 503-675-0948

Barnard Commercial
17937 SW McEwan Road
Suite 200
Portland, OR 97224

craig@barnardcommercial.com

Visit our website at:
www.barnardcommercial.com



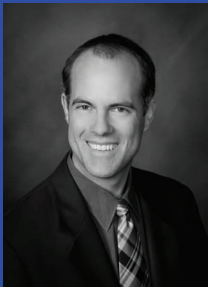
All information contained herein was obtained from sources deemed reliable. No guarantee is made with respect to accuracy. Specifications subject to change without notice.

FOR LEASE

Barnard Commercial
Real Estate

1234 Baseline

Hillsboro, Oregon



Craig Barnard
President

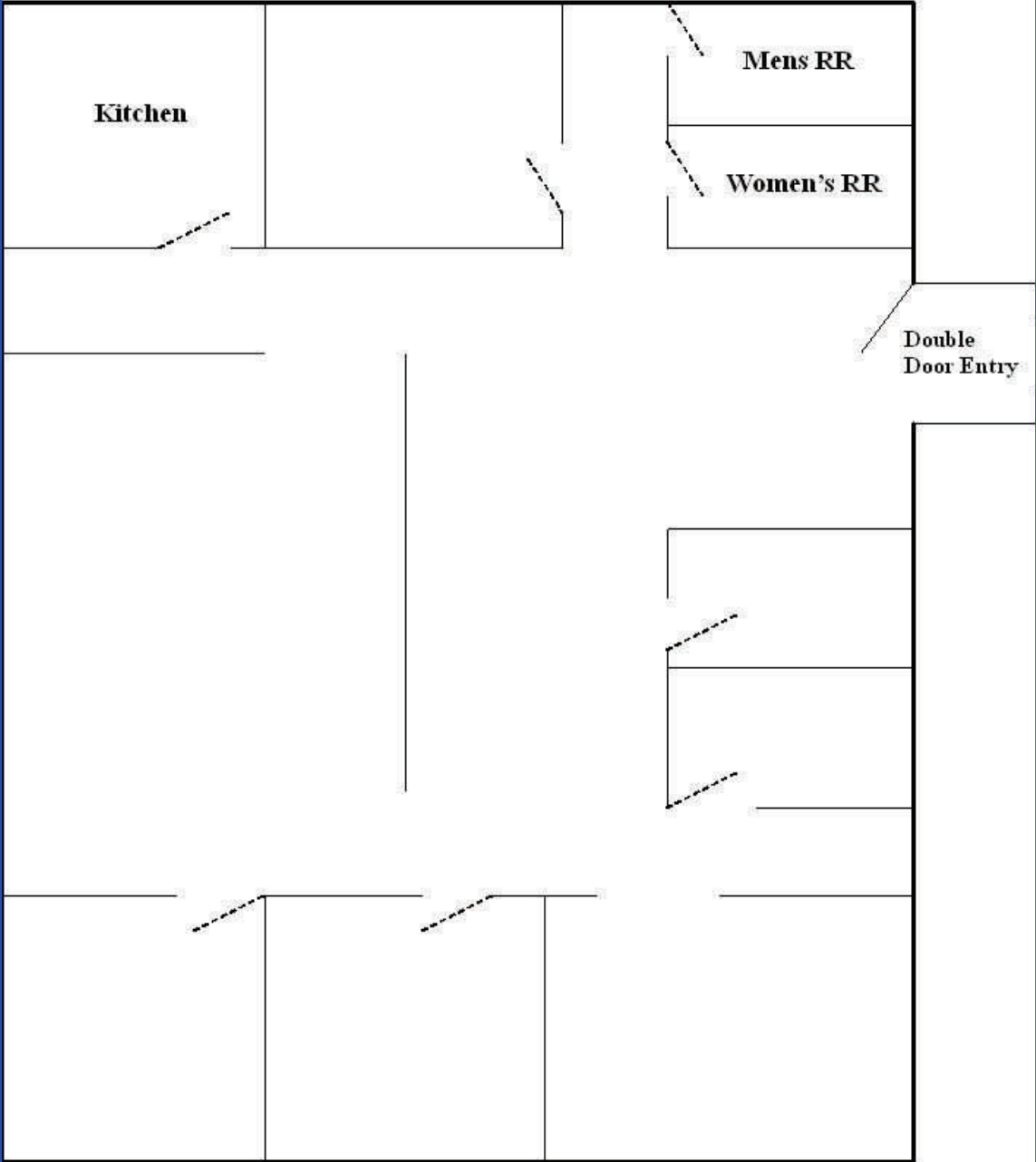
Phone: 503-675-0900
Fax: 503-675-0948

Barnard Commercial
17937 SW McEwan Road
Suite 200
Portland, OR 97224

craig@barnardcommercial.com

Visit our website at:
www.barnardcommercial.com

†Not drawn to scale



All information contained herein was obtained from sources deemed reliable. No guarantee is made with respect to accuracy. Specifications subject to change without notice.